

**Events and Information**  
**(please see your newsletter for**  
**details)**

**Wednesday, December 31**

First Night in Boston and First Church  
Café, all spaces

**Tuesday, January 1**

**New Year's Day**  
Church Office closed

**Monday, January 5**

2:00 pm, Women's Spirituality Group,  
Parlor  
6:30 pm, Women's Spirituality Group,  
Parlor  
6:30 pm, Women's Spirituality Group,  
Hale Chapel

**Tuesday, January 6**

6:00 pm, Zen Meditation Group,  
Hale Chapel

**Thursday, January 8**

7:00 pm, Young Adults Group,  
Hale Chapel

**Sunday, January 11**

10:00 am, House Committee Meeting,  
Parlor  
10:30 am, Singing Circle, Hale Chapel  
12:30 pm, Music Committee Meeting,  
Conference Room

**Monday, January 12**

6:00 pm, Purls of Wisdom Group, Parlor

**Senior Minister**

Rev. Stephen Kendrick

**Associate Minister**

Rev. Rosemary Lloyd

**Director of Religious Education**

Ruth Owen

**Director of Music**

Paul Cienniwa, DMA

**Administrator and  
Events Coordinator**

Joan Whalen

**Sexton**

Ken Hudson

**Ministerial Interns**

Tim House  
Robin Tanner

**Chair of Trustees**

Howard K. Fuguet

**Standing Committee Chair**

John Benson

---

**The First Church Choir**

**Soprano:** Allyson Herman,  
Vanessa Isiguen, Maren Keyt,  
Christine Teeters


**Alto:** Carola Emrich-Fisher,  
Christina English, Rachel  
Hauge

**Tenor:** Ethan Bremner, Chris  
Mahoney, Larry Phillips

**Bass:** David Frieze, Bill Thorpe,  
Bob Winkley

## Order of Service

Sunday, December 28, 2008

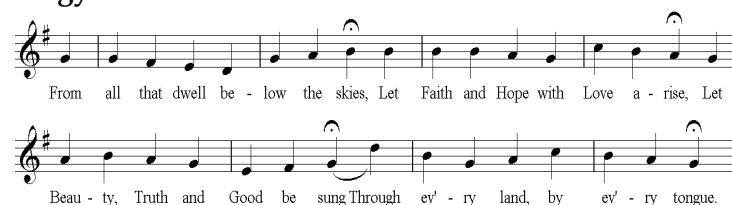
- Prelude** *Musette, Tambourins*  
Michel Corrette (1707-1795)
- Welcome and Announcements** Rev. Stephen Kendrick
- Hymn #347** Gather the Spirit GATHER THE SPIRIT
- Chalice Lighting** Tim House
- Time For All Ages** Rev. Stephen Kendrick
- Passing of a Rose**
- Responsive Reading# 437** Let Us Worship
- Anthem** *A New Year's Carol*  
Benjamin Britten (1913—1976)
- 
- Sing le-vy dew, sing le-vy dew, the wa-ter and the wine; The se-ven bright gold wires and the bu-gles that do shine.
- Reading** *The Guest House*, By Rumi Tim House
- Hymn #6** Just As Long As I Have Breath  
NICHT SO TRAUIG
- Prayer** Rev. Stephen Kendrick

**Offertory** *No One Is Alone* Stephen Sondheim (b.1930)

Rebecca Teeters, soprano

No one here to guide you, Now you're on your own. Only me beside you. Still you're not alone. No one is alone, truly. Sometimes people leave you Halfway through the wood. Others may deceive you. You decide what's good. You decide alone, But no one is alone. People make mistakes, Fathers, mothers, Holding to their own, Thinking they're alone. Honor their mistakes. Everybody makes One another's terrible mistakes. Things will come our right now. we can make it so. Someone is on your side. No one is alone.

### \*Doxology



**Sermon** "Into the Woods" Tim House

**\*Hymn #102** Woyyaya BENG-LI

**Benediction** Tim House

**Postlude** *Prelude and Fugue, c major*  
Johann Ludwig Krebs (1713-1780)

\*As you are able, please stand.

---

Large type hymnals, including responsive readings, are available as you enter the Sanctuary.

**Please join us for coffee and fellowship after the service in the narthex. Visitors are invited to take a blue cup so that we may recognize and welcome you.**

Childcare for very young children is available from 10:30-12:30 pm in the John Winthrop School.